



What are the Parts of a Flower?

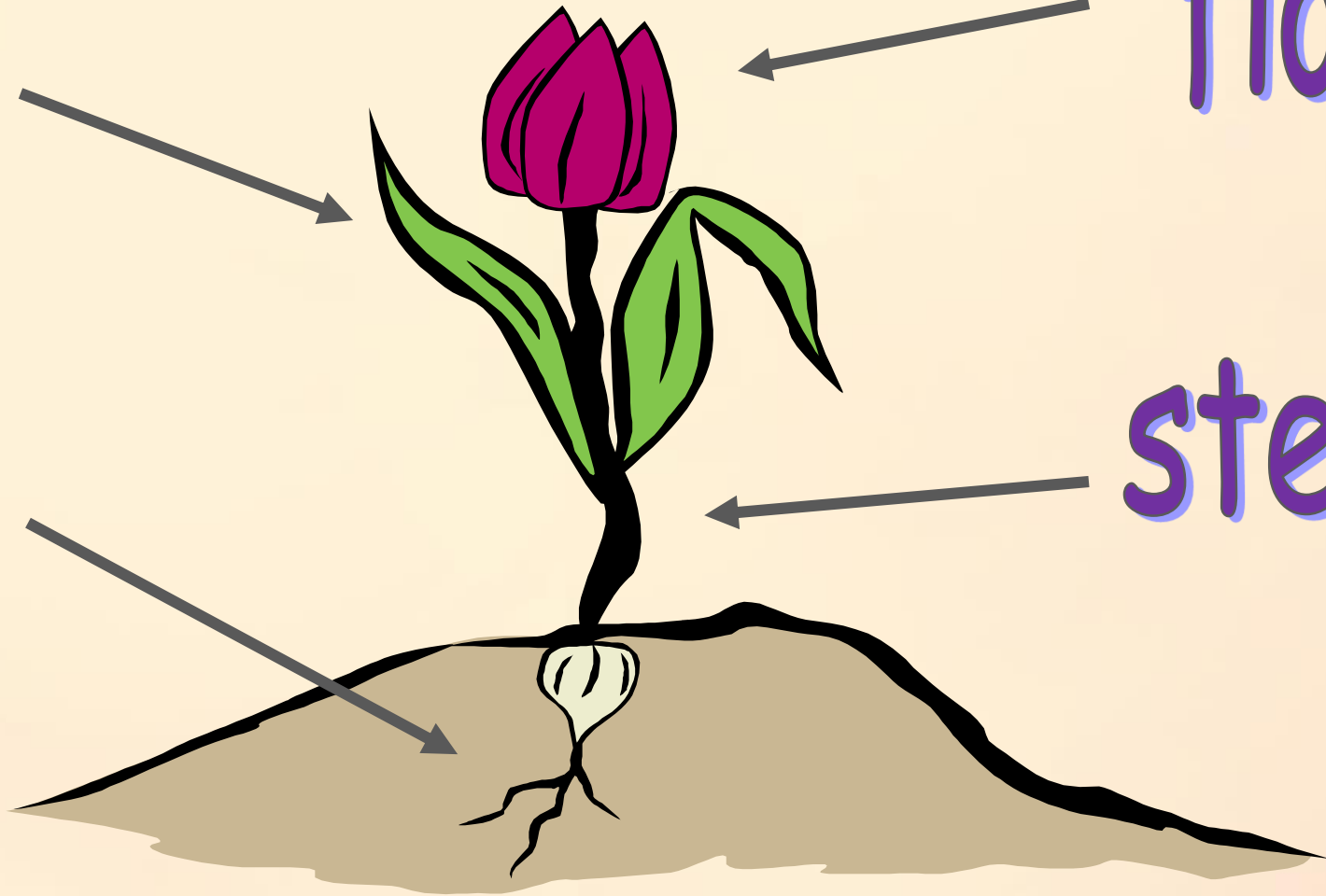
What are the four main parts of a flower?

leaves

flower

roots

stem



- Roots

Absorbs water and nutrients from the soil.

- Stem

Transports water and minerals with the xylem and phloem.

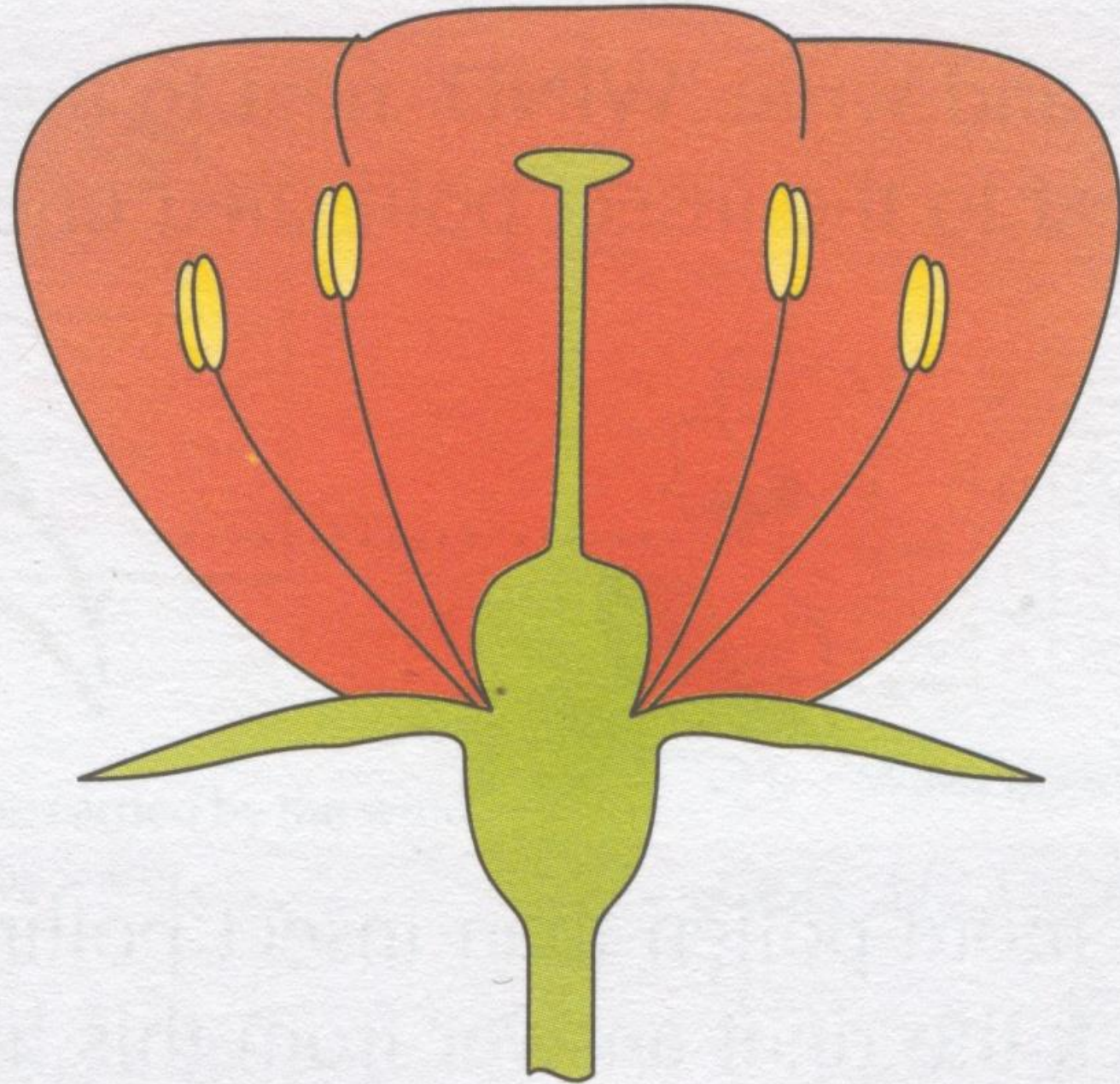
- Leaves

Provide the plant with energy through the process of photosynthesis.

- Flower

Helps the plant to reproduce through pollination.

What are the male and female parts of a flower?



The pistil

(female part)

stigma

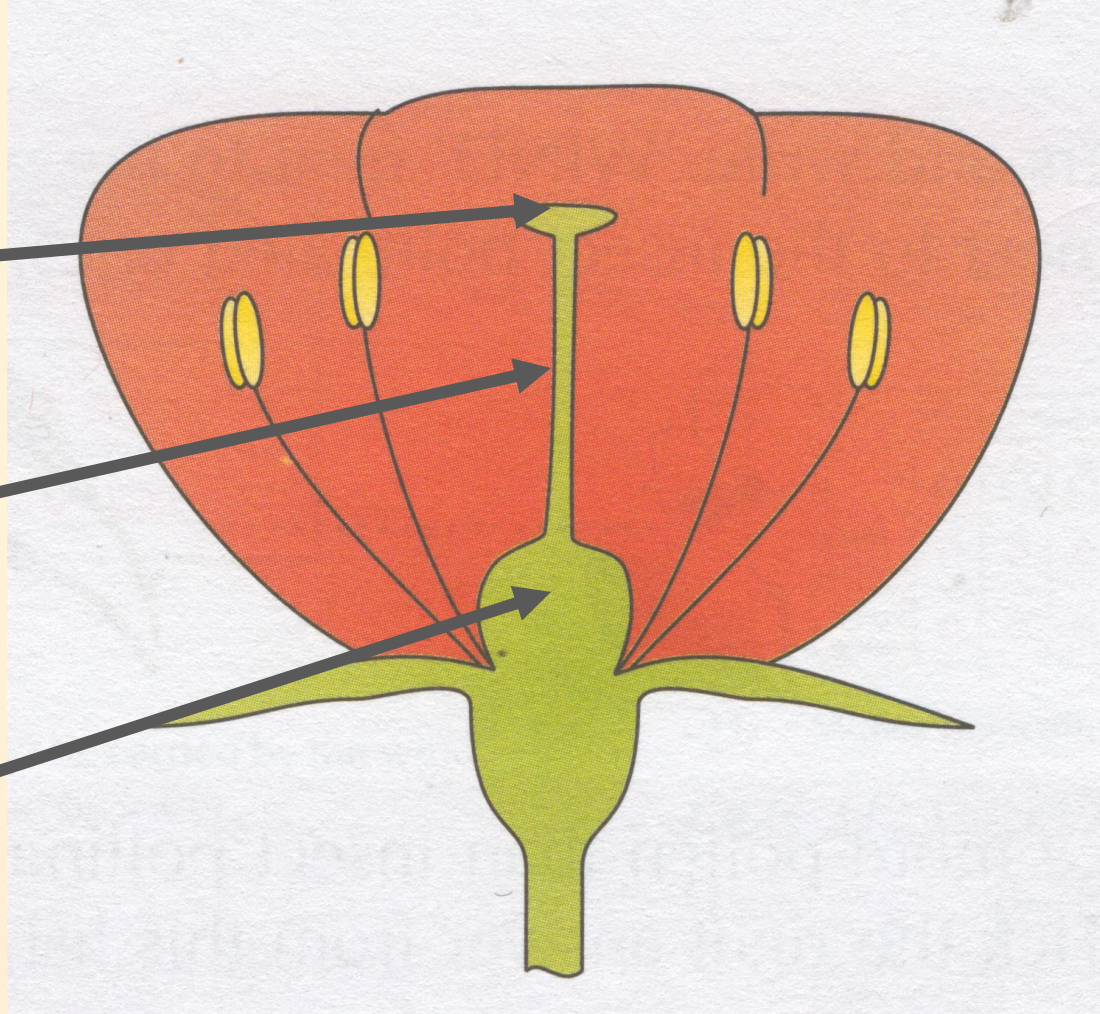
Sticky
Catches pollen

style

Tube that
pollen travels
down

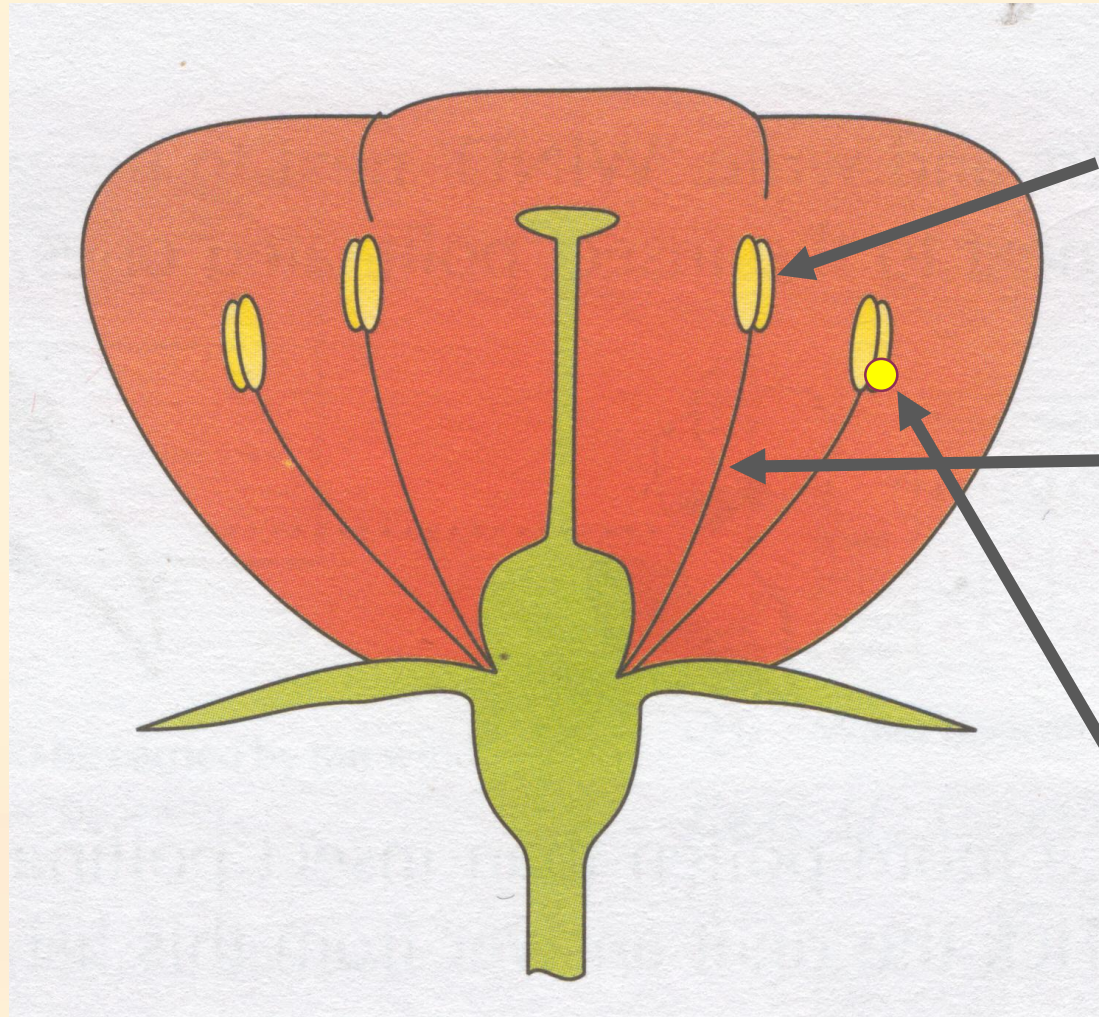
ovary

Contains eggs



The stamen

(male part)



anther

Produces &
contains pollen

filament

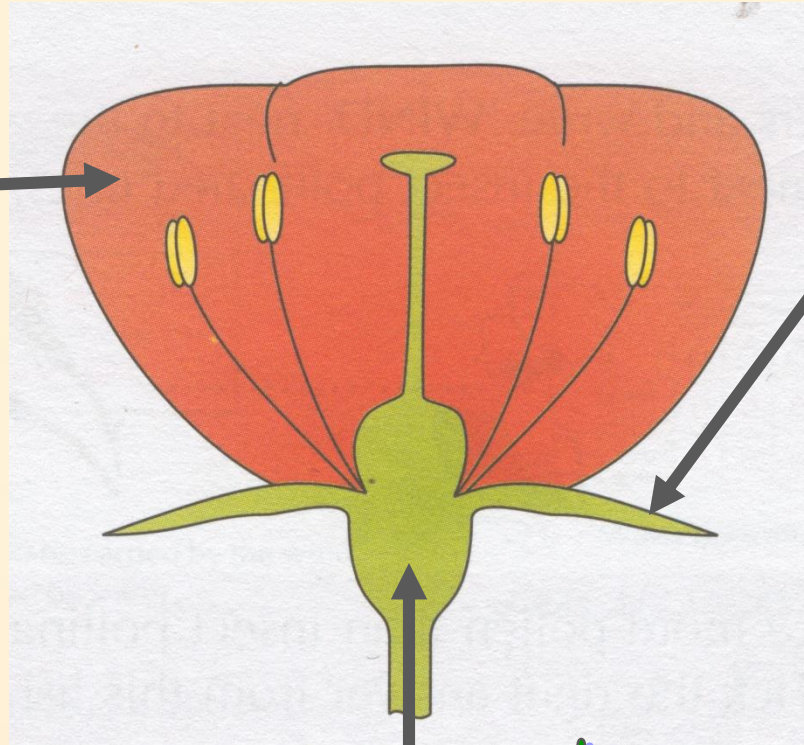
Holds up the
anther

pollen

Yellow powder
Fertilizes eggs

petals

The bright, colorful part of a flower and they attract pollinators.



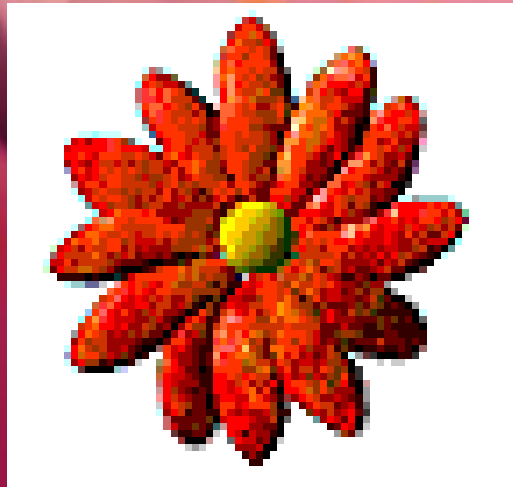
sepal

They cover the outside of a flower bud to protect it before it opens.

receptacle

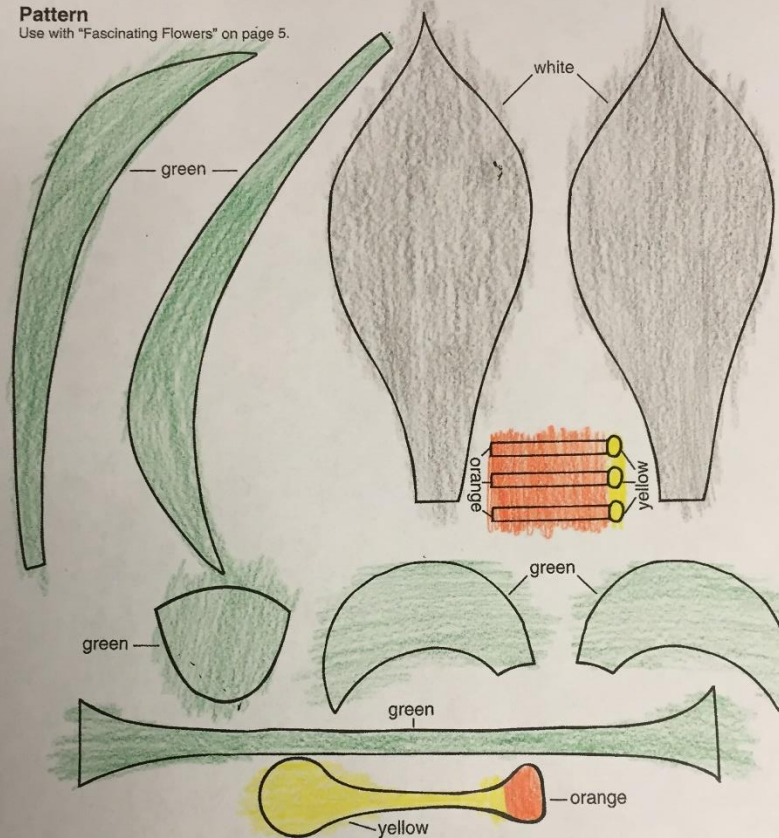
End of flower stalk

Making your flower



Pattern

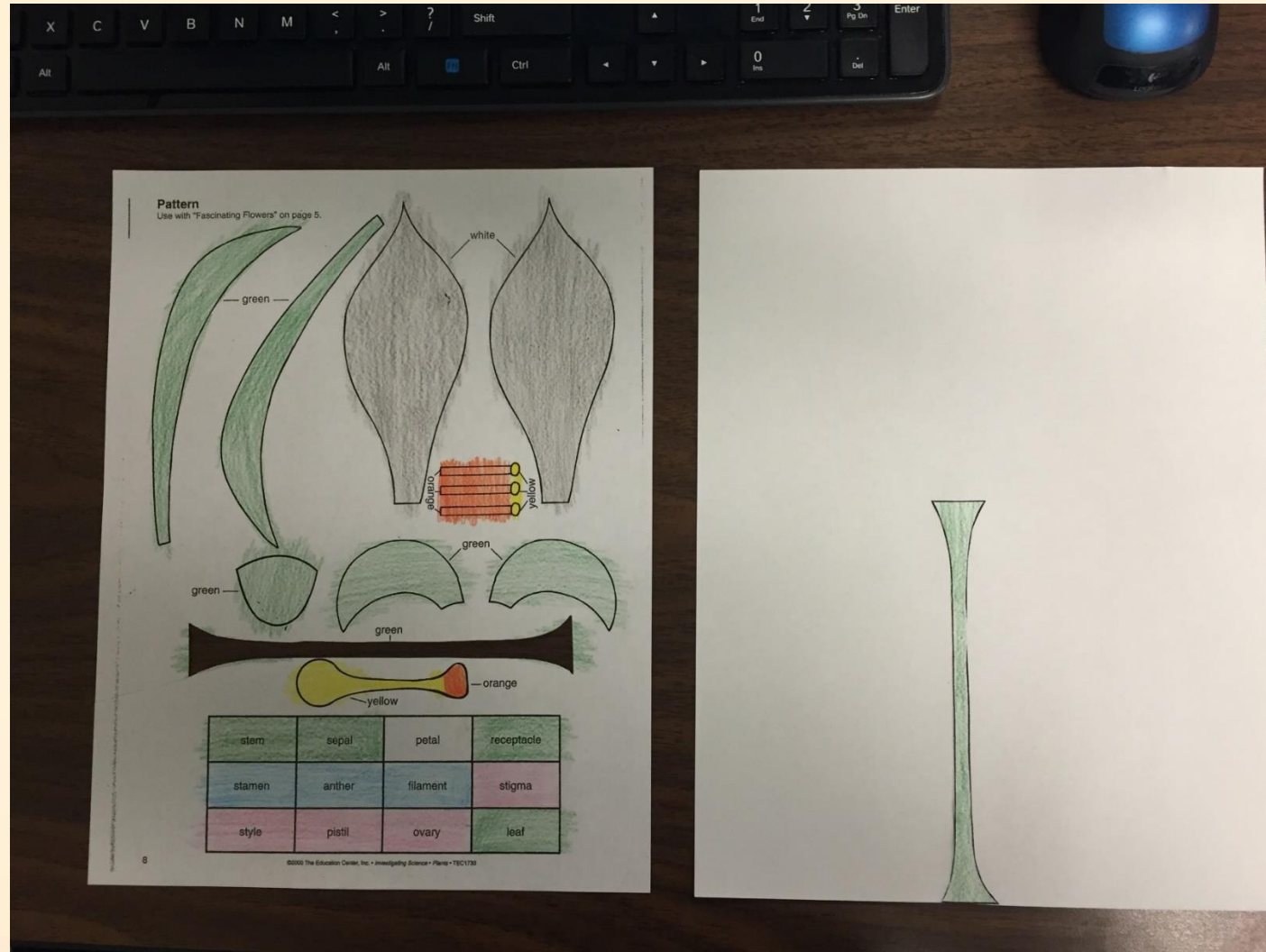
Use with "Fascinating Flowers" on page 5.



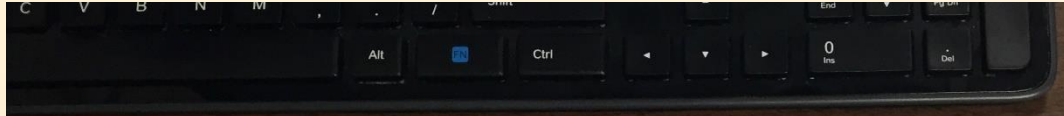
stem	sepal	petal	receptacle
stamen	anther	filament	stigma
style	pistil	ovary	leaf

Color in all of the parts first.

Remember that the label MUST be colored like shown but your actual petals can be whatever color you wish.



Cut out and glue as you go. Don't cut out everything and then start to glue or you will lose all of the pieces.

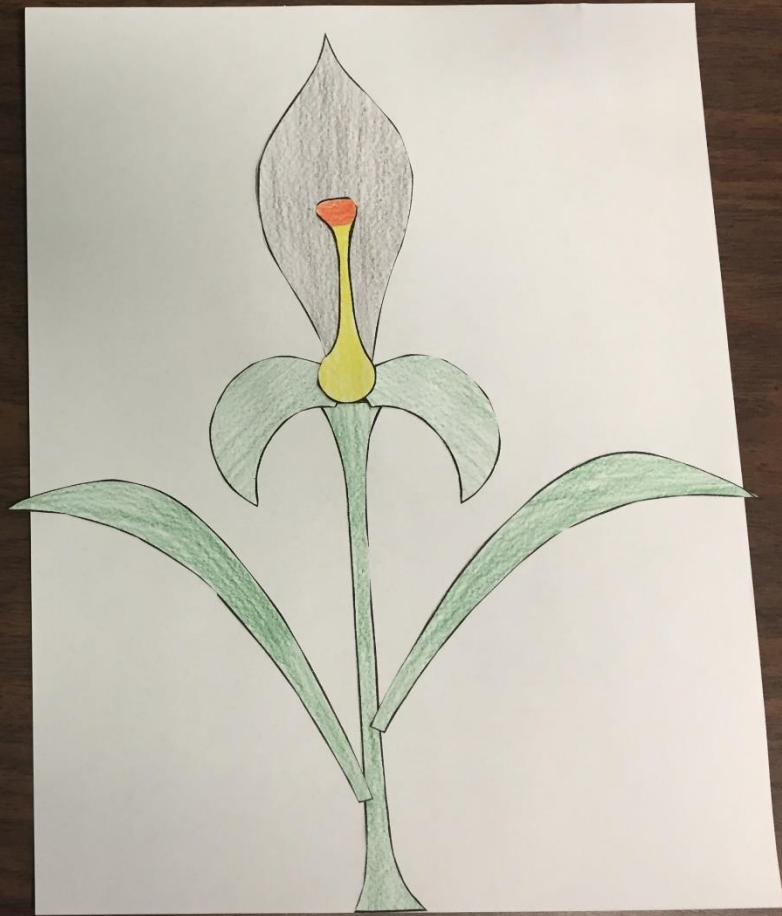


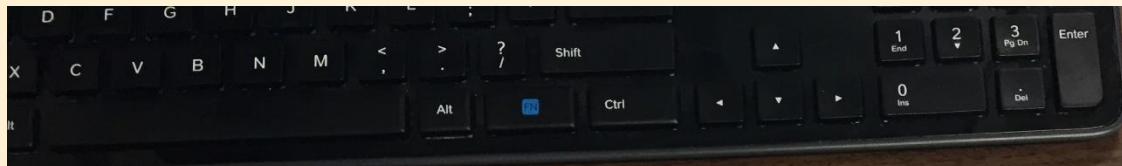
Pattern
Use with "Fascinating Flowers" on page 5.

stem	sepal	petal	receptacle
stamen	anther	filament	stigma
style	pistil	ovary	leaf

8

©2000 The Education Center, Inc. • Investigating Science • Plants • TEC1733



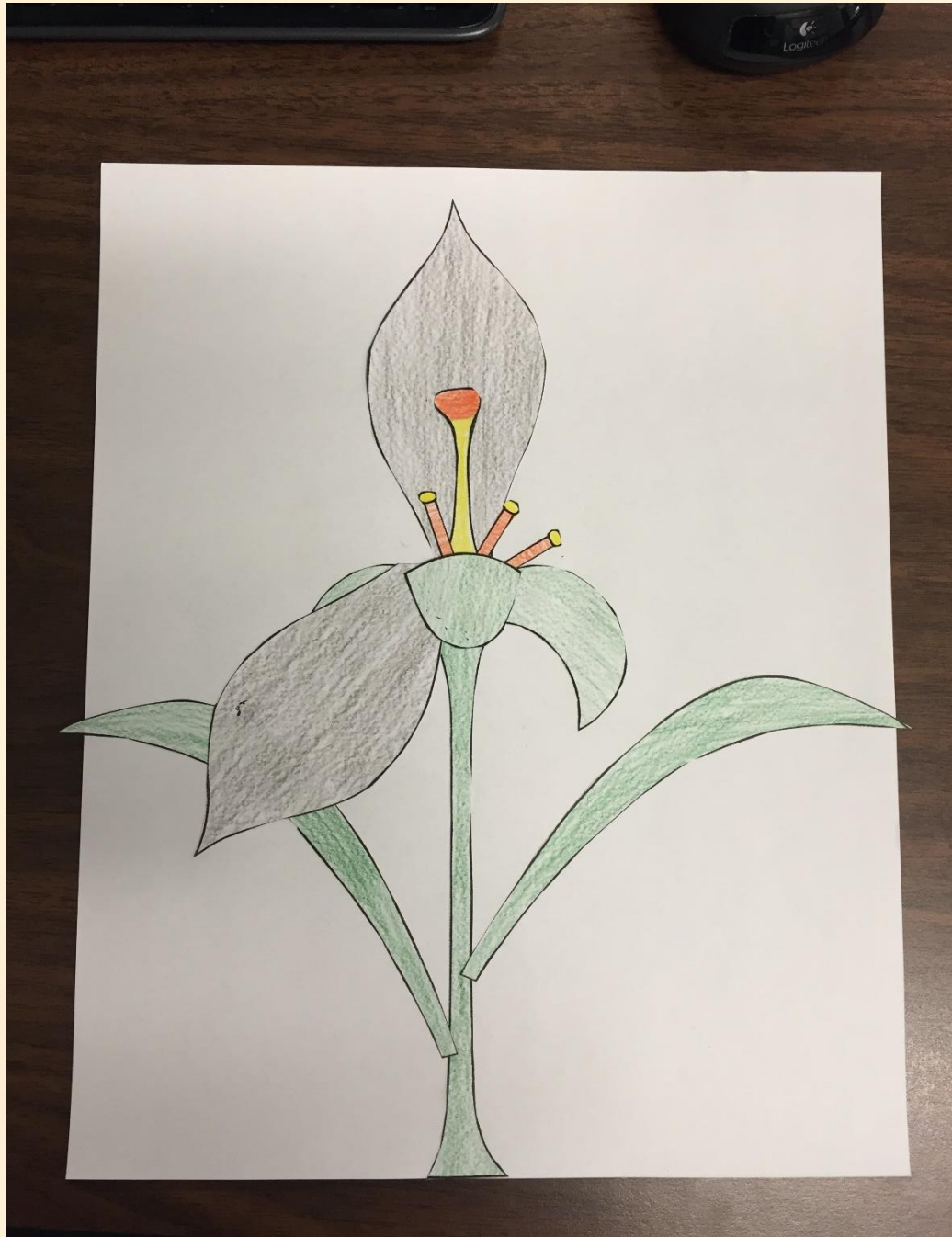


Pattern
Use with "Fascinating Flowers" on page 5.

stem	sepal	petal	receptacle
stamen	anther	filament	stigma
style	pistil	ovary	leaf

©2000 The Education Center, Inc. • Investigating Science • Plants • TEC1730



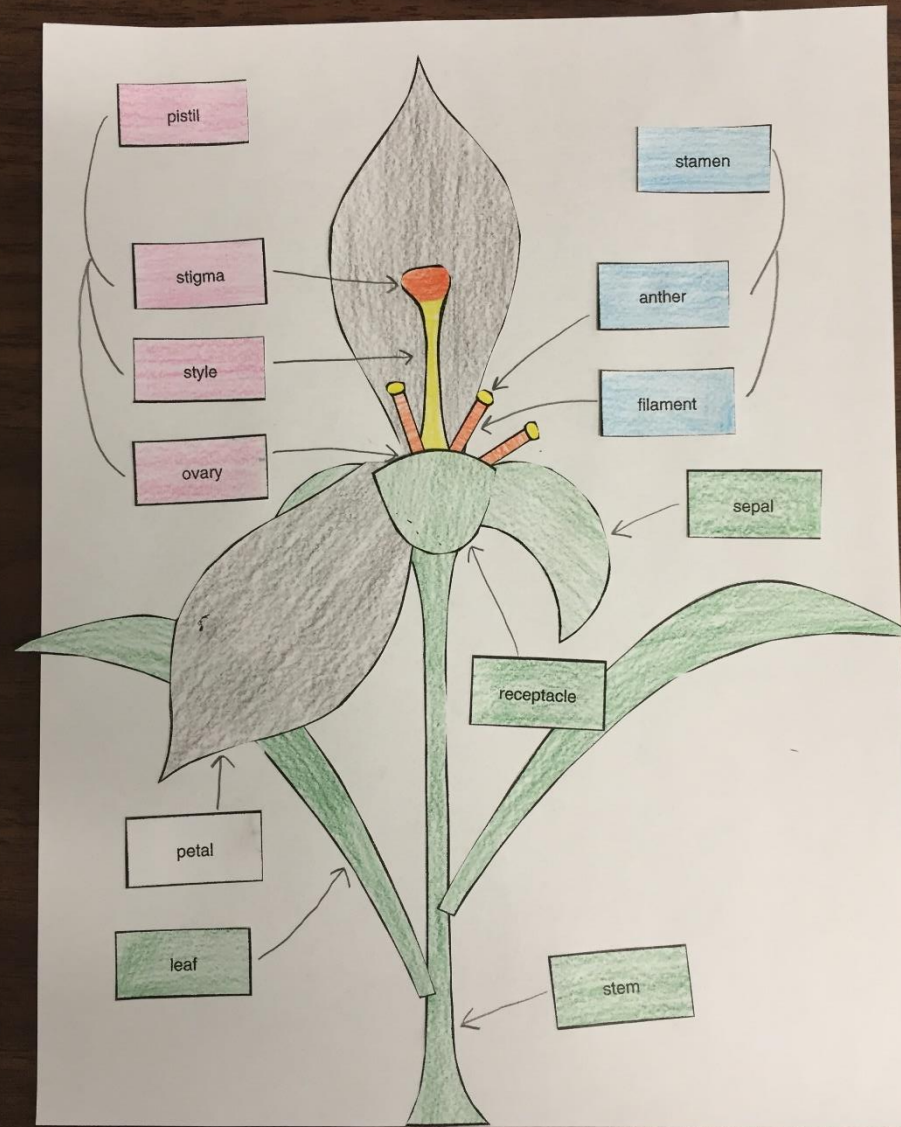


This is what
your flower
should look like
once you have
glued down all
of the pieces.

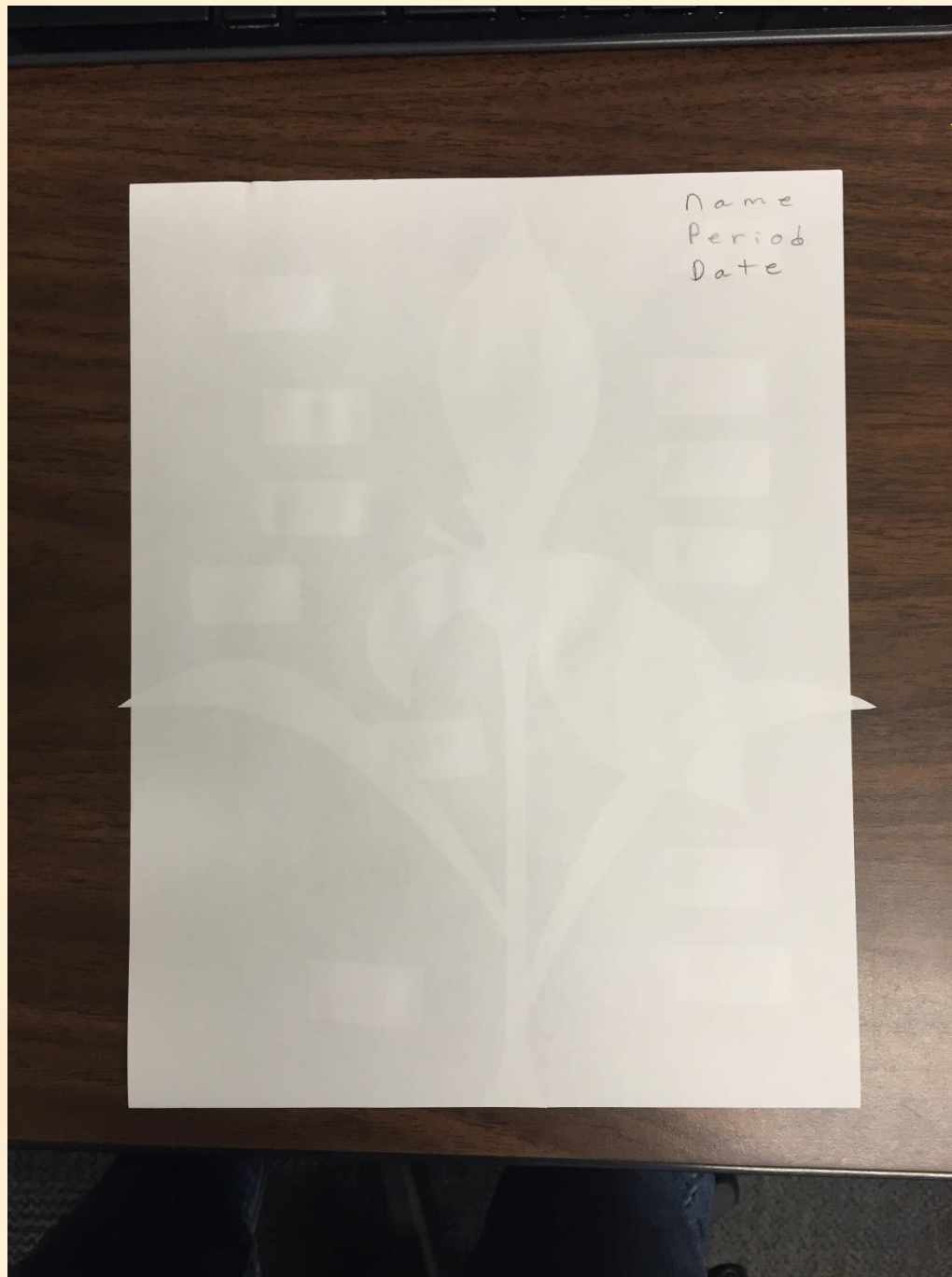
stem	sepal	petal	receptacle
stamen	anther	filament	stigma
style	pistil	ovary	leaf

Remember that your labels have to be colored like this. Cut out your labels and label the parts of your flower. Then draw arrows to the actual part. See next slide for final product.

This is what
your final flower
should look like.
Everything is
labeled and
arrows point to
the parts.



Name, period
and date goes
on the back of
the paper.



Answer the following questions on the
back of your paper in complete sentences:

1. How are the pistil and the stamen similar and different?
2. How do the four main parts of the plant work together to keep the plant alive?
3. Why are petals important to a flowering plant?
4. Why is the sepal possibly the most important part of the flower?
5. In your opinion, how is a flower and its different parts similar to your house?